

RDC 300 Hot Water Storage Tank



Main features	
Application	DHW heating
Description	hot water storage tank with integrated enamelled heat exchanger, permitting installation of an el. heating element
Working fluid	water (tank), water or water/glycol mixture (max. 1:1) (heat exchanger)
Code	12 759

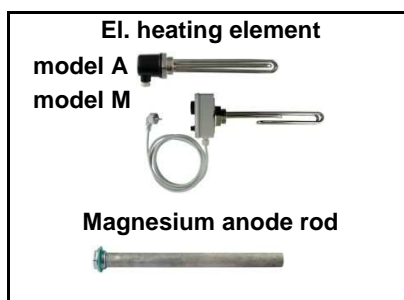
Energy Efficiency Data (as per EC Regulation No. 813/2013)	
	RDC 300
Energy efficiency class	C
Standing loss	83 W
Storage volume	292 l

Technical data	
Total tank volume	302 l
Fluid volume in tank	292 l
Heat exchanger (HE) volume	10 l
Heat exchanger surface area	1,5 sqm
Max. working temperature in tank	95 °C
Max. working temperature in HE	110 °C
Max. working pressure in tank	10 bar
Max. working pressure in HE	10 bar

Hot water heating from 10 °C to 45 °C at heating water temp. of 60 °C	
Heat exchanger	860 l/h (35 kW)

Materials	
Tank material	S235JR, inner surface enamelled (DIN 4756)
Heat exchanger material	S235JR+N, outer surface enamelled (DIN 4756)
Tank perimeter insulation	PU foam (hard)
Tank perimeter insulation's outer	plastic

Dimensions, Tipping height, Weight	
Tank diameter	500 mm
Tank diameter with insulation	597 mm
Tank overall height	1790 mm
Tipping height	1860 mm
Empty weight	114 kg

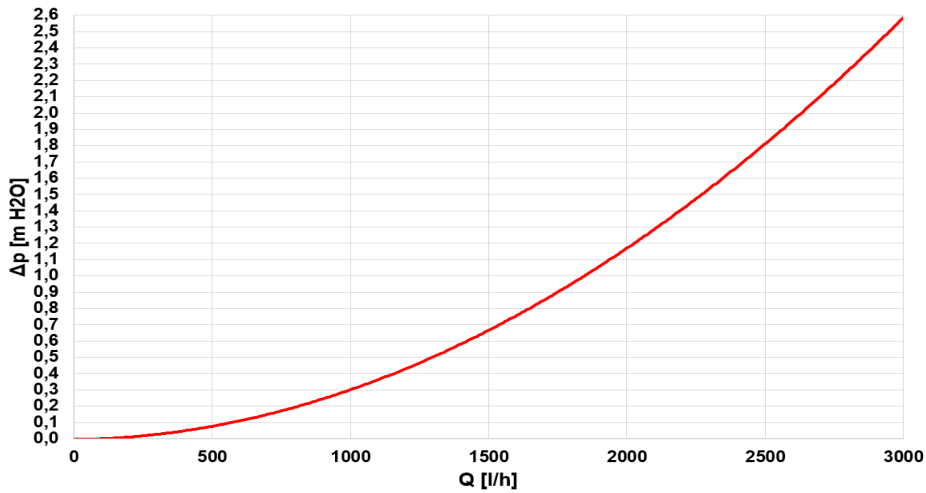


Accessories	
El. heating element	models ETT-A, D, F, G, M
Heating elem. max. length / output	495 mm / 6,0 kW
Electronic anode rod	code 9 174

Spare parts	
Magnesium anode rod (G 5/4")	code 448
Magnesium anode rod (G 5/4") with flange and gasket	code 15 847

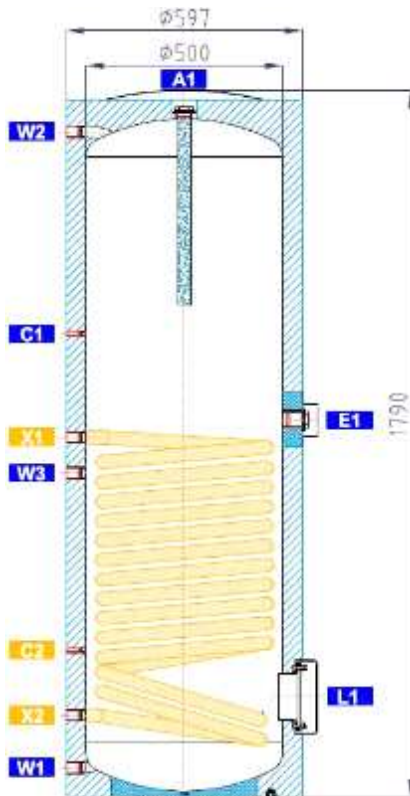
RDC 300 Hot Water Storage Tank

Heat exchanger pressure drop



Dimensions

Tipping height 1860 mm.



TAPPINGS

pos.	connection	height [mm]
DHW heating		
W1	G 3/4" F	74
W2	G 3/4" F	1674
W3	G 3/4" F	815
El. heating elements		
E1	G 6/4" F	949
Control and safety		
C1	G 1/2" F	1165,5
C2	G 1/2" F	369,5
Solar thermal system		
X1	G 3/4" F	905
X2	G 3/4" F	205
Magnesium anode rod		
A1	G 5/4" F	1722
Flange		
L1	8 x M10	251